

MONTHLY MEMBERSHIP PROGRESS REPORT

District 23 A

Results as of: 3/31/2025

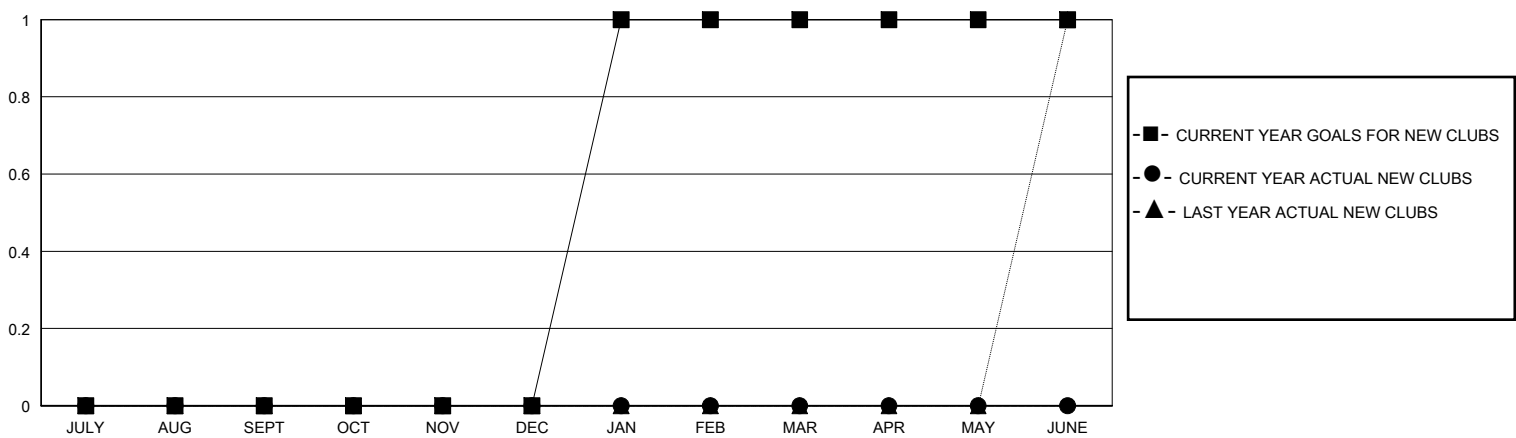
GMT:

LOCATION CONNECTICUT

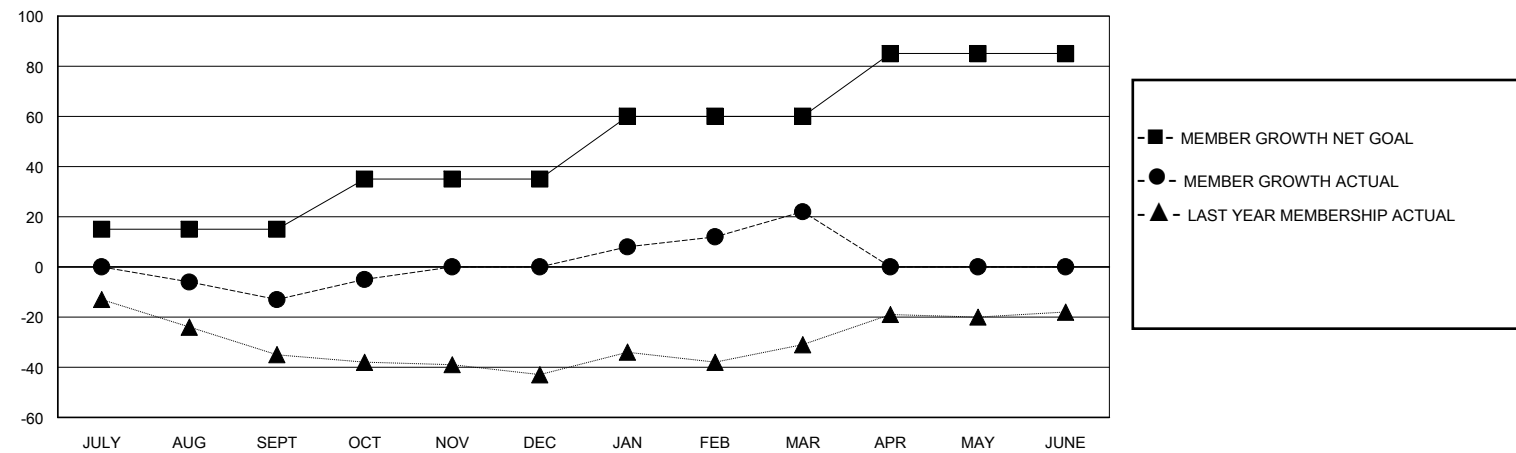
GMT CA

| Clubs                 |               |           |               | Members               |                        |                      |  |
|-----------------------|---------------|-----------|---------------|-----------------------|------------------------|----------------------|--|
| RESULTS FOR 2024-2025 |               |           |               | RESULTS FOR 2024-2025 |                        |                      |  |
| QUARTER               | NEW CLUB GOAL | NEW CLUBS | DROPPED CLUBS | QUARTER               | MEMBER GROWTH NET GOAL | MEMBER GROWTH ACTUAL | DROPPED MEMBERS ACTUAL (including transfers) |
| JULY/AUG/SEPT         | 0             | 0         | 0             | JULY/AUG/SEPT         | 15                     | 20                   | 33   |
| OCT/NOV/DEC           | 0             | 0         | 0             | OCT/NOV/DEC           | 20                     | 43                   | 23   |
| JAN/FEB/MAR           | 1             | 0         | 0             | JAN/FEB/MAR           | 25                     | 40                   | 13   |
| APR/MAY/JUNE          | 0             | 0         | 0             | APR/MAY/JUNE          | 25                     | 0                    | 0  |

GOALS AND ACTUAL NEW CLUBS CUMULATIVE



GOALS AND ACTUAL MEMBERS CUMULATIVE



|                  |   |                                 |              |
|------------------|---|---------------------------------|--------------|
| DROPPED CLUBS: 0 | 30 CLUBS OF 47 ADDED 1 OR MORE NEW MEMBERS                | GENDER DISTRIBUTION             |              |
|                  |   | MALE                            | 795 (61.53%) |
|                  |   | FEMALE                          | 497 (38.47%) |
| DROPPED MEMBERS  | <a href="#">CLICK HERE FOR CUMULATIVE MEMBERSHIP DATA</a> | TOTAL FAMILY UNIT MEMBERS       |              |
| DECEASED         |   | 0                               |              |
| CLUB CANCELLED   |   | FAMILY MEMBERS PAYING HALF DUES |              |
| OTHER            |   | 0                               |              |
| TOTAL            |   |                                 |              |
|                  |   |                                 |              |